

# TRAILBLAZER ATTACHMENTS



## TRAILBLAZER MOWER OPERATION AND PARTS MANUAL

*Read and understand the manual. This manual provides information and procedures to safely operate and maintain the Offset Mower.*



# Pre-Delivery Checklist

The Dealer should inform the Purchaser of this product of the Warranty terms, provisions, and procedures that are applicable. The Dealer and Purchaser should review the contents of the Operator’s Manual including safety equipment, safe operation and maintenance, review the Safety Signs on the implement (and tractor if necessary), and the Purchaser’s responsibility to train their operators in safe operation procedures.

- IMPLEMENTS: I have explained that a Safety Shield should be installed and maintained in good repair. If the shield is not installed the purchaser accepts responsibility for any personal injury due to not having the shield.
- HYDRAULICS: I have made certain that the hydraulic supply pump, hoses, and motor is in good repair and fastened securely in place to prevent injuries.
- MOUNTED IMPLEMENTS: I have explained that it is not possible to guard against thrown objects when the cutter is lifted off the ground or operated in a vertical configuration, and that operator is responsible for watching out for persons in the work area.

## PRE-DELIVERY SERVICE CHECK AND ADJUST OR LUBRICATE AS REQUIRED

Refer to this Manual for Details

### Inspection Performed - Warranty and Safety Procedures Explained - Installation Complete

#### MOWER

- Make Sure The Pump Motor And Adapter Bolts Are Properly Tightened
- Make Sure The Blade Carrier Bolt Is Properly Tightened And Cotter Pin Is In Place
- Make Sure The Two Blade Bolts Are Tight
- Make Sure The Blades Are Installed In Correct Rotational Direction
- Review Procedure To Configure The Mower In One Of The Three Possible Configurations
- Make Sure All Hardware Is Properly Tightened
- Retighten the tapered roller bearing in the pivot arm after 15 minutes of initial use and again at 30 minutes. Recheck again before the next use.

#### LUBRICATION & HYDRAULICS

- Make Sure All Grease Joints Are Lubricated.
- Check All Hoses And Coupling For Damage Or Leaks.

#### MOWER TO TRACTOR CONNECTIONS

- Make Sure The Proper Hydraulic Connections Are Available On the Tractor

#### SAFETY ITEMS

- Make Sure Safety Shield Is Properly Installed
- Make Sure Safety Decals Are Installed
- Review This Operator’s Manual
- Review The AEM Mower Safety Manual (Supplied in Canister)
- AEM Mower Safety Video Has Been Shown To Purchaser

I have thoroughly instructed the buyer on the above-described equipment. This review included the Operation and Parts Manual content, equipment care, adjustments, safe operation, and applicable warranty policy.

Date \_\_\_\_\_

Dealer Rep. Signature \_\_\_\_\_

The above equipment and Operator’s Manual have been received by me (the purchaser), and I have been thoroughly instructed as to care, adjustments, safe operation, and applicable warranty policy. **As the purchaser I have read, understand, and take responsibility for the use of this attachment. I understand and accept responsibility for the proper use of this Offset Mower. I acknowledge this mower is dangerous if not used correctly or if the safety information is not followed.**

Date \_\_\_\_\_

Owner’s Signature \_\_\_\_\_





***If registering your warranty by mail (pg. 50), send a copy of your Pre-Delivery Checklist (pg.3) along with this page to Trailblazer Attachments, LLC***

Customer Name: \_\_\_\_\_ Phone: \_\_\_\_\_

Customer Address: \_\_\_\_\_

City: \_\_\_\_\_ State: \_\_\_\_\_

Zip Code: \_\_\_\_\_

Cutter Model: \_\_\_\_\_ Serial Number: \_\_\_\_\_

Date Purchased: \_\_\_\_\_ Dealer Salesperson: \_\_\_\_\_

Dealership Name: \_\_\_\_\_ Dealership Location: \_\_\_\_\_

Mail to:

Trailblazer Attachments LLC.  
#7 Rocky Mount Road  
Athens TN 37303

Or Fax to:

423-405-5904

Or Email to:

Sales@TrailBlazerAttachments.com

Cut Here to Remove Page or Make Copies of This Page



# Table of Contents

---

<b>1. INTRODUCTION</b> .....	<b>8</b>	<b>6. TRANSPORTING</b> .....	<b>33</b>
1.1 Welcome .....	8	6.1 Transporting Safety (Road) .....	33
1.2 Safe Operation .....	8	<b>7. STORAGE</b> .....	<b>34</b>
1.3 Intended Usage .....	8	7.1 Storage Safety .....	34
1.4 Owner/Operator Manual Storage .....	9	7.2 Placing In Storage .....	34
1.5 Operator Orientation .....	9	7.3 Removing From Storage .....	34
1.6 Serial Number Location .....	9	<b>8. SERVICE AND MAINTENANCE</b> .....	<b>35</b>
1.7 Product Improvements .....	9	8.1 Maintenance Safety .....	35
1.8 Disposal of Equipment at End of Useful Life .....	9	8.2 Greasing .....	36
1.9 Unanswered Questions .....	9	8.3 Blade Servicing .....	36
<b>2. SAFETY</b> .....	<b>10</b>	8.3.1 Blade Removal .....	36
2.1 General .....	10	8.3.2 Blade Installation .....	36
2.2 Safety Alert Symbols .....	10	8.3.3 Blade Sharpening .....	36
2.3 Safety Icon Nomenclature .....	11	8.4 Blade Carrier Removal .....	36
2.3.1 Personal Protection/Important Information .....	11	8.5 Blade Carrier Installation .....	36
2.3.2 Prohibited Actions .....	11	8.6 Service Record .....	37
2.3.3 Hazard Avoidance .....	11	8.7 Welding Repairs .....	37
2.4 General Safety Instruction .....	12	<b>9. PARTS</b> .....	<b>38</b>
2.5 Training .....	13	<b>10. WARRANTY</b> .....	<b>50</b>
2.6 OSHA Training Requirements .....	13		
2.7 Federal Laws and Regulations .....	14		
2.8 Sign-Off Form .....	15		
2.9 Operation Safety .....	16		
2.10 Transporting Safety .....	16		
2.11 Storage Safety .....	16		
2.12 Maintenance Safety .....	16		
<b>3. SAFETY SIGNS AND INSTRUCTIONAL LABELS</b> .....	<b>17</b>		
3.1 General Information .....	17		
3.2 How to Install Replacement Safety Signs .....	17		
3.3 Safety Signs .....	18		
<b>4. ASSEMBLY</b> .....	<b>21</b>		
<b>5. OPERATION</b> .....	<b>23</b>		
5.1 Operating Safety .....	23		
5.2 Work Area Safety .....	23		
5.3 Tractor Requirements .....	24		
5.4 Attaching to Tractor .....	24		
5.5a TB-Max & Max JR Mowing Configuration .....	26		
5.5b TB-Flex & Flex JR Mowing Configuration .....	29		
5.6 Detaching from Tractor .....	31		
5.7 Mower Checklist .....	31		
5.8 Operation Checklist .....	32		
5.9 Right of Way (Roadway) Mowing .....	32		

# 1. INTRODUCTION

## 1.1 Welcome



Standard Offset Configuration of the TB-Max & TB-Max JR

Congratulations on your choice of a Trailblazer Attachments, LLC (Trailblazer) offset mower. This equipment has been designed and manufactured to meet the needs of discerning users.

The Trailblazer offset mower is designed to cut grass, weeds, and light brush.

Many features incorporated into this offset mower are the result of suggestions made by customers like you. Read this manual carefully to learn how to operate the offset mower safely and how to set it to provide maximum cutting efficiency.

The offset mowers are designed for light-duty applications such as weed, grass, and light brush up to 3" diameter. The cutters can be used to mow under a fence line or it can be turned vertically to mow the sides of hedgerows and tree lines.

The mower uses a single spindle with two free-swinging blades, which reduce the shock of impact when a stationary object is contacted. A shear key in the input shaft protects the motor from damage.

### **WARNING**



**Operating the offset mower without the safety shield can result in physical injury or death. Make sure the shield is properly installed and in working condition before operating the offset mower.**

By following the operating instructions in conjunction with a good maintenance program, your Trailblazer offset mower will provide many years of trouble-free service.

## 1.2 Safe Operation

Safe, efficient, and trouble-free operation of your offset mower requires that you, and anyone else who will be using or maintaining the unit, read and understand the information contained within the Owner's Manual.

Use this manual for frequent reference and to pass on to new operators or owners.

### **WARNING**



#### **Read And Understand Manual**

To prevent personal injury or even death, be sure you read and understand all of the instructions in this manual and other related OEM equipment manuals! The offset mower, if not used and maintained properly, can be dangerous to users unfamiliar with its operation. Do not allow operating, maintaining, adjusting, or cleaning of this offset mower until the user has read this manual and has developed a thorough understanding of the safety precautions and functions of the unit.

**This offset mower is designed for the specific purpose of cutting grass, weeds, and light brush. DO NOT modify or use this offset mower for any application other than that for which it was designed.**

**Offset mowers maintained or operated improperly or by untrained personnel can be dangerous; exposing the user and/or bystanders to possible serious injury or death.**

## 1.3 Intended Usage

Do not use this offset mower for any other purpose than its intended use; cutting grass, weeds, and light brush and an in-line or offset application.



The offset mower can also be used in a vertical configuration for mowing along hedge rows and tree lines.



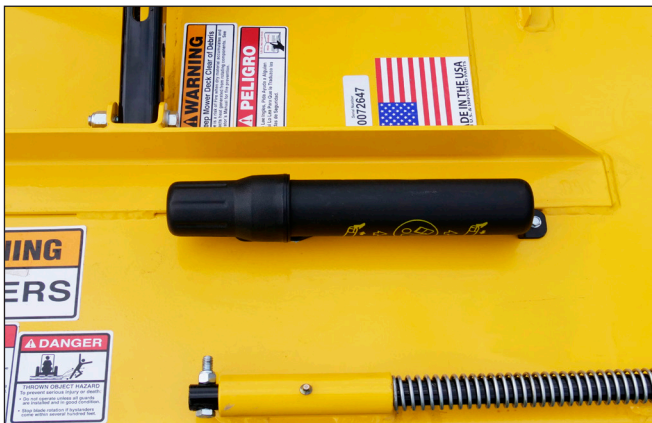
**This unit WILL NOT work on a skid steer machine.**



Using the mower on a skid steer will void the warranty and have the potential for serious injury to the user or bystanders.

### 1.4 Owner/Operator Manual Storage

Always store the Owner/Operator manual and other operating materials in the document storage tube.

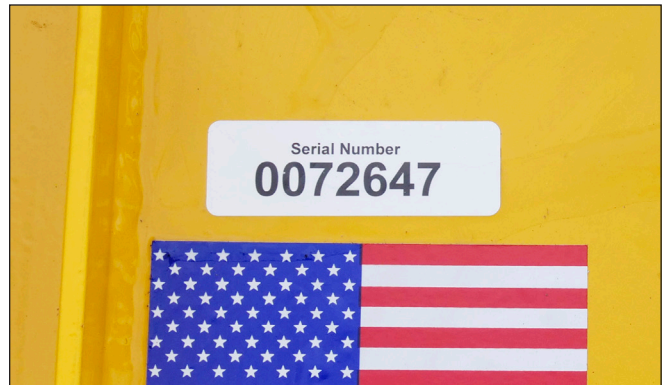


### 1.5 Operator Orientation

The directions left, right, front, and rear, as mentioned throughout this manual, are as seen from the tractor operator's seat and facing in the direction of travel.

### 1.6 Serial Number Location

The serial number decal is located on the left-hand, back-side of the mower deck.



Model Number \_\_\_\_\_

Serial Number \_\_\_\_\_

### 1.7 Product Improvements

Because Trailblazer Attachments, LLC maintains an ongoing program of product improvement, we reserve the right to make improvements in design or changes in specifications without incurring any obligation to install them on units previously sold.

### 1.8 Disposal of Equipment at End of Useful Life

The Trailblazer Attachments, LLC offset mower has been designed for the specific purpose of cutting grass, weeds, and light brush. When this unit is no longer capable of doing its designed purpose, it should be dismantled and scrapped. Do not use any materials or components from this unit for any other purpose.

### 1.9 Unanswered Questions

If you have any questions not answered in this manual or require additional copies or the manual is damaged, please contact your dealer or:

Trailblazer Attachments LLC.  
#7 Rocky Mount Road  
Athens TN 37303

Phone: (423) 405-5150  
Fax: 423-405-5904

Email: [Sales@TrailBlazerAttachments.com](mailto:Sales@TrailBlazerAttachments.com)



## 2. Safety

### 2.1 General

Safety of the operator and bystanders is one of the main concerns in designing and developing a new piece of equipment. Designers and manufacturers build in as many safety features as possible. However, every year many accidents occur which could have been avoided by a few seconds of thought and a more careful approach to handling the equipment.

Most work-related accidents are caused by failure to observe basic safety rules or precautions. An accident can often be avoided by recognizing potentially hazardous situations before an accident occurs. As you assemble, operate, or maintain the offset mower (unit), you must be alert to potential hazards. You should also have the necessary training, skills, and tools to perform any assembly or maintenance procedures.

Improper operation and maintenance of this unit could result in a dangerous situation that could cause injury or death.

If you have any questions not answered in this manual or require additional copies or the manual is damaged, please contact your dealer or:

Trailblazer Attachments LLC.

#7 Rocky Mount Road  
Athens TN 37303

Phone: 423-405-5150

Fax: 423-405-5904

Email: Sales@TrailBlazerAttachments.com

### **WARNING**



**Do not assemble, operate, or maintain the unit until you read and understand the information contained in this manual.**



**Safety precautions and warnings are provided in this manual and on the unit. If these hazard warnings are not heeded, bodily injury or death could occur to you or to other persons.**

Trailblazer Attachments, LLC cannot anticipate every possible circumstance that might involve a potential hazard. The warnings in this manual and on the unit are, therefore, not all-inclusive. If a method of assembly, operation, or maintenance not specifically recommended by us is used, you must satisfy yourself that it is safe for you and for others. You should also ensure that the unit will not be damaged or be made unsafe by the methods that you choose.

The information, specifications, and illustrations in this manual are based on the information that was available at the time this material was written and can change at any time without notice.

### 2.2 Safety Alert Symbols



This is the safety alert symbol. It is used to alert you to potential personal injury hazards. Obey all safety messages that follow this symbol to avoid possible injury or death.

This manual contains DANGERS, SAFETY INSTRUCTIONS, CAUTIONS, IMPORTANT NOTICES, and NOTES which must be followed to prevent the possibility of improper service, damage to the equipment, personal injury, or death. The following keywords call the readers' attention to potential hazards.

Hazards are identified by the "Safety Alert Symbol" and followed by a signal word such as "DANGER", "WARNING", or "CAUTION".

### **DANGER**

**Indicates an imminently hazardous situation which, if not avoided, will result in death or serious injury. This signal word is limited to the most extreme situations.**

### **WARNING**

**Indicates a potentially hazardous situation which, if not avoided, could result in death or serious injury.**

### **CAUTION**

**Indicates a potentially hazardous situation which, if not avoided, may result in minor or moderate injury.**

### **NOTICE**

*Indicates that equipment or property damage can result if instructions are not followed.*

### **SAFETY INSTRUCTIONS**

**Safety instructions (or equivalent) signs indicate specific safety-related instructions or procedures.**

**Note:** Contains additional information important to a procedure.

## 2.3 Safety Icon Nomenclature

Pictorial icons signal a type of hazard and warn of personal protection issues, prohibited actions, and hazard avoidance.

### 2.3.1 Personal Protection/ Important Information








-  Read the manual
-  Maintenance procedure
-  Damaged hazard label
-  Eye protection
-  Fire extinguisher
-  First aid kit
-  Hand protection
-  Head protection
-  Hearing protection
-  Inspect equipment
-  OEM parts only
-  Protective shoes
-  Remove key
-  Set parking brake
-  Stop engine
-  Think safety
-  Transmission in park
-  Use proper support
-  Use proper tools

-  Use two people when lifting heavy objects
-  Visibility
-  Rollover protection
-  Wear seat belt
-  Weight rating
-  Chemical flushing kit

### 2.3.2 Prohibited Actions

-  Do not alter or modify
-  Use proper tools
-  Do not weld
-  No alcohol
-  No drugs
-  No smoking
-  No young children
-  No riders

### 2.3.3 Hazard Avoidance

-    Crush hazard
-  Crush hazard (chock wheels)
-  Crush hazard (foot)
-  Defective or broken part
-  Entanglement hazard

-  Explosive force hazard
-  Explosive separation hazard
-  Fall hazard
-  Fire hazard
-  Cutter blade contact hazard (hand)
-  Cutter blade contact hazard (foot)
-  Lifting hazard
-  Cutting hazard
-  Pinch point hazard
-  Projectile hazard
-  Rollover protection
-  Safety alert symbol
-  Safety shields
-  Sharp object hazard
-  Slipping injury
-  Tire pressure
-  Tripping injury



## 2.4 General Safety Instruction

The owner/operator is responsible for the SAFE use and maintenance of the offset mower. Make sure anyone who is operating, maintaining, or working around the offset mower is familiar with the operating and maintenance procedures and related SAFETY information contained in this manual. This manual will take you step-by-step through your working day and alerts you to all good safety practices that should be used while using the offset mower.

In addition to the design features of the offset mower, including safety signs, accident prevention is dependent upon the awareness, concern, prudence, and proper training of the people involved in the operation, maintenance, and storage of the offset mower.

In addition to this safety section, refer also to safety messages and instructions in each of the appropriate sections of the offset mower manual.

These general safety instructions apply to the overall use and maintenance of the offset mower.

More specific instructions on safety are found in the operation, maintenance, and storage sections of this manual. Refer to these sections before performing any of these tasks.

### **WARNING**

Failure to comply with the following safety instructions can and will result in serious injury and possibly even death if they are not understood and followed.



#### **Read and Understand Manual**

To prevent personal injury or even death, be sure you read and understand all of the instructions in this manual and other related OEM equipment manuals! The Trailblazer offset mower, if not used and maintained properly, can be dangerous to users unfamiliar with its operation. Do not allow operating, maintaining, adjusting, or cleaning of this offset mower until the user has read this manual and has developed a thorough understanding of the safety precautions and functions of the unit.

This offset mower is designed for the specific purpose of cutting grass, weeds, and light brush. **DO NOT** modify or use this offset mower for any application other than that for which it was designed.

Offset mowers maintained or operated improperly, or by untrained personnel, can be dangerous; exposing the user and/or bystanders to possible serious injury or death.

### **WARNING**



#### **Provide User with Literature**

Trailblazer offset mower owners must provide operator instructions to anyone using the offset mower before use, and at least annually thereafter. Refer to “2.6 OSHA Training Requirements” on page 13.



#### **Stay Clear**

Clear the area of people, especially small children, before using the offset mower. Under no circumstances should young children be allowed to work with or around the offset mower.



#### **Impaired User Hazard**

Do not attempt to assemble, operate, or maintain this offset mower under the influence of drugs or alcohol. Consult your doctor before using this offset mower while taking prescription medications.



#### **Crush Hazard**

Do not allow anyone to ride on the tractor or the offset mower. Falling or crushing hazards can result in severe injuries or death.



#### **Falling Hazard**

Do not allow riders on the hitch, tractor, or offset mower at any time. Falling can result in severe injuries or death.



#### **No Unauthorized Modifications**

Do not modify the offset mower or safety devices. Do not weld on the unit. Unauthorized modifications may impair its function and safety. Personal injury or death can result from unauthorized modifications.

If the offset mower has been altered in any way from the original design, Trailblazer does not accept any liability for injury or warranty.



#### **Damaged Parts Hazard**

Do not use the offset mower if any parts are damaged. If the offset mower has a defect, immediately stop using it and remedy the problem before continuing.



#### **Thrown Objects Hazard**

The offset mower can throw objects up to 300 feet. To avoid serious injury or death: Keep all thrown object shielding in place. Inspect area for potential thrown objects before cutting.

Do not operate the offset mower with the deck raised.

## CAUTION

The following safety instructions are provided to help prevent potential injury. Not following these instructions may lead to injury.

### Personal Protection Equipment

When using this offset mower, wear appropriate personal protective equipment. This list may include, but is not limited to:



- Protective shoes with slip resistant soles
- Protective goggles, glasses, or face shield
- Protective clothing and gloves
- Safety vest (when operating near roads)
- Hearing protection



### Ear Protection

Wear suitable ear protection during prolonged exposure to excessive noise.



### Hearing Loss

Prolonged Exposure To Loud Noise May Cause Permanent Hearing Loss!

Working environments with noise-producing equipment can cause partial to permanent hearing loss. We recommend using hearing protection any time noise levels exceed 80 decibels (dB). Noise levels over 85 dB, on a long-term basis, can cause severe hearing loss. Noise levels over 90 dB over a period of time can cause permanent and even total hearing loss.

Hearing loss from loud noise is cumulative over a lifetime without hope of natural recovery.



### Crush Hazard

The tractor should be equipped with a Roll Over Protective Structure (ROPS) and a seat belt. A crushing hazard can occur if the driver is ejected from the seat while the tractor is in motion. Fasten the seat belt whenever the tractor is moving.

## SAFETY INSTRUCTIONS

The following safety instructions are provided to help prevent injury or limit equipment damage.



### Safety Signs

Replace any missing or hard-to-read safety signs or instructional labels. Use care when washing or cleaning the offset mower.

Replacement safety sign locations and part numbers are provided in this manual and are available from an authorized dealer parts department or the factory.



### First Aid Kit

Have a first aid kit available for use should the need arise and know how to use it.



### Fire Extinguisher

Have a fire extinguisher available for use should the need arise and know how to use it.



### Think SAFETY!

**Work SAFELY!**

## 2.5 Training

Anyone who will be using and/or maintaining the offset mower must read, clearly understand, and follow ALL safety, operation, and maintenance information presented in this manual, other related OEM manuals, and the safety signs

If you do not understand any information in this manual, see your dealer or contact Trailblazer Attachments, LLC before proceeding.

Do not use or allow anyone else to use this offset mower until all information has been reviewed. Annually review this manual before the season start-up.

Make periodic reviews of SAFETY and OPERATION of the offset mower a standard practice. An untrained operator is not qualified to use this offset mower.

## 2.6 OSHA Training Requirements

The following training requirements have been taken from Title 29, Code of Federal Regulations Part 1928.57 (a) (6). [www.osha.gov](http://www.osha.gov).

Operator instructions. At the time of initial assignment and at least annually thereafter, the employer shall instruct every employee who operates an agricultural tractor and implements in the safe operating practices and servicing of equipment with which they are or will be involved, and of any other practices dictated by the work environment.

## 2.7 Federal Laws and Regulations

### **IMPORTANT FEDERAL LAWS AND REGULATIONS CONCERNING EMPLOYERS, EMPLOYEES AND OPERATORS**

This sections is intended to explain in broad terms the concept and effect of the following federal laws and regulations. It is not intended as a legal interpretation of the laws and should not be considered as such.

#### **U.S. PUBLIC LAW 91-596 (The Williams-Steiger Occupational Safety and Health Act of 1970) OSHA**

##### **This Act Seeks:**

“ ... to assure so far as possible every working man and woman in the nation safe and healthful working conditions and to preserve our human resources ... “

#### **DUTIES**

##### **Sec. 5(a) Each Employer -**

- (1) shall furnish to each of its employees employment and a place of employment which are free from recognized hazards that are causing or are likely to cause death or serious physical harm to its employees.
- (2) shall comply with occupational safety and health standards promulgated under this Act.
  - (b) Each employee shall comply with occupational safety and health standards and all rules, regulations, and orders issued pursuant to this Act which are applicable to his or her own actions and conduct.

##### **OSHA Regulations**

Current OSHA regulations state in part: “At the time of initial assignment and at least annually thereafter, the employer shall instruct every employee in the safe operation and servicing of all equipment with which the employee is, or will be involved.” These will include (but are not limited to) instructions to:

Keep all guards in place when the machine is in operation;

Permit no riders on equipment;

Stop engine, disconnect the power source, and wait for all machine movement to stop before servicing, adjusting, cleaning, or unclogging the equipment, except where the machine must be running to be properly serviced or maintained, in which case the employer shall instruct employees as to all steps and procedures which are necessary to safely service or maintain equipment.

Make sure no one is within 300 feet of machinery before starting the engine, engaging power, or operating the machine.

#### **EMPLOYEE TRACTOR OPERATING INSTRUCTIONS:**

1. Securely fasten your seat belt if the tractor has a ROPS.
2. Where possible, avoid operating the tractor near ditches, embankments, and holes.
3. Reduce speed when turning, crossing slopes, and on rough, slick, or muddy surfaces.
4. Stay off slopes too steep for safe operation.
5. Watch where you are going, especially at row ends, on roads, and around trees.
6. Do not permit others to ride.
7. Operate the tractor smoothly - no jerky turns, starts, or stops.
8. Hitch only to the drawbar and hitch points recommended by tractor manufacturers.
9. When tractor is stopped, set brakes securely and use park lock if available.

##### **Child Labor Under 16 Years Old**

Some regulations specify that no one under the age of 16 may operate power machinery. It is your responsibility to know what these regulations are in your own area or situation. (Refer to U.S. Dept. of Labor, Employment Standard Administration, Wage & Home Division, Child Labor Bulletin #102).

## 2.8 Sign-Off Form

Trailblazer follows the general Safety Standards specified by the Farm Equipment Manufacturers Association (FEMA), and the American National Standards Institute (ANSI). Anyone who will be using and/or maintaining the offset mower must read and clearly understand ALL safety, operation and maintenance information presented in this manual.

Do not use or allow anyone else to use this offset mower until all information has been reviewed. Annually review this manual before the season start-up.

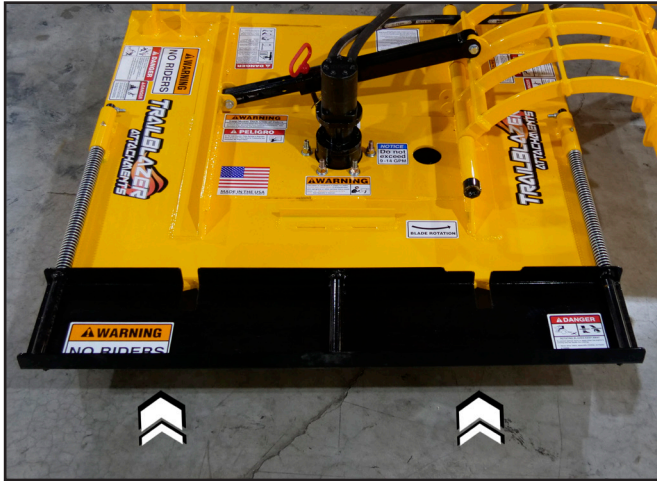
Make periodic reviews of SAFETY and OPERATION of the offset mower a standard practice. An untrained operator is not qualified to use this offset mower.

This sign-off sheet is provided for your record keeping to show that all personnel who will be working with the equipment have read and understand the information in this Operator's Manual and Parts Book and have been instructed in the operation of the equipment.

Sign-Off Form		
Date	User's Signature	Owner's Signature

## 2.9 Operation Safety

Refer to the Operation section for safety recommendations related to using the offset mower. All applicable safety recommendations in other sections should also be followed.



The safety shield found on all TrailBlazer mowers is designed to reduce the risk of thrown objects; however the offset mower deck and safety shield cannot prevent all objects from escaping the blade enclosure in every mowing condition, especially in the vertical configuration.

It is possible for objects to ricochet and escape, traveling as much as 300 feet. Inspect safety shield each day of operation and replace any broken or missing chains, as required.

## 2.10 Transporting Safety

Refer to the Transporting section for safety recommendations related to transporting the offset mower. All applicable safety recommendations in other sections should also be followed.

## 2.11 Storage Safety

Refer to the Storage section for safety recommendations related to storing the offset mower. All applicable safety recommendations in other sections should also be followed.

## 2.12 Maintenance Safety

Refer to the Service and Maintenance section for safety recommendations related to maintaining the offset mower. All applicable safety recommendations in other sections should also be followed.

### 3. SAFETY SIGNS AND INSTRUCTIONAL LABELS

---

#### 3.1 General Information

The types of safety signs (hazard labels) and instructional labels, along with their locations on the equipment, are shown in the following illustrations. Good safety practices require that you familiarize yourself with the various safety signs, the type of warning, and the area or particular operation related to that area that requires your SAFETY AWARENESS.



**Think SAFETY!**

**Work SAFELY!**

Pay close attention to the safety signs and instructional labels attached to the tractor and the offset mower. Duplicate safety signs, which are attached to the offset mower, can also be found in this section. If the offset mower is missing a label or one is unreadable, replace the label before using the offset mower.

### SAFETY INSTRUCTIONS



#### Safety Signs and Instructional Labels

1. **Keep safety signs or instructional labels clean and legible at all times. Use a clean, damp cloth to clean safety decals.**

---
2. **Replace any missing or hard-to-read safety signs or instructional labels.**

---
3. **Use care when washing or cleaning the equipment not to remove or damage the labels. When using a pressure washer to clean the offset mower, avoid spraying too close to decals; high-pressure water can enter through very small scratches or under edges of decals causing them to peel or come off.**

---
4. **Locations for the labels and replacement part numbers are shown in this section.**

---
5. **Replacement parts must have replacement labels attached during installation and/or before the offset mower is used.**

---
6. **Labels are available from your authorized dealer or from Trailblazer at no charge.**

---

#### 3.2 How to Install Replacement Safety Signs

1. Clean and dry the installation area.

**Note:** Do not install the signs if the temperature is below 50°F (10°C).

2. Determine the exact position before you remove the backing paper.
3. Remove the backing paper.
4. Align the sign over the specified area and carefully press the sign to the part/frame.

**Note:** Small air pockets can be pierced with a pin and smoothed out using the piece of backing paper.



### 3.3 Safety Signs





**! DANGER**

**KEEP AWAY - THROWN OBJECTS**

	<ul style="list-style-type: none"> <li>Inspect the area before mowing for potential mower hazards. Remove or avoid all foreign objects such as wire, cable, metal objects, and all other foreign material.</li> <li>Foreign material can be thrown from the mower and cause serious bodily injury to the operator and passersby.</li> </ul>
	<ul style="list-style-type: none"> <li>Do Not let rotating blades contact solid objects like rocks, posts, curbs or guard rails.</li> <li>Operate only if all Guards-Deflectors are in place and in good condition.</li> </ul>
	<ul style="list-style-type: none"> <li>Do Not operate with Mower or Wing raised off the ground.</li> <li>Stop mowing if Passersby enter the area of thrown objects. (See Operator's Manual)</li> </ul>
	<ul style="list-style-type: none"> <li>Stay away from rotating blades. Keep hands and feet away from rotating blades.</li> <li>Do Not approach mower until all motion has stopped.</li> </ul>

**! DANGER**



**THROWN OBJECT HAZARD**  
To prevent serious injury or death:

- Do not operate unless all guards are installed and in good condition.
- Stop blade rotation if bystanders come within several hundred feet.

**! WARNING**

All rotary cutters have the ability to discharge objects at high speeds, which could result in serious injury to bystanders or passers-by.

Therefore, this cutter is not to be operated along highways or in any area where people may be present unless all sides of the unit are enclosed by permanent bands, safety chains, or other factory approved safety shields that are in good repair.

**! WARNING**

**Keep Mower Deck Clear of Debris**

There is a risk of Fire when dry material accumulates and contacts heat generated from rotating components. See Operator's Manual for fire prevention.

**! WARNING**

Use paper or cardboard to check for leaks. NEVER USE YOUR HAND. If oil penetrates skin, gangrene or other serious injury could occur. GET IMMEDIATE MEDICAL ATTENTION. See Operator's manual.



**! PELIGRO**

Si No Lee Ingles, Pida Ayuda a Alguien Que si Lo Lea Para Que le Traduzca las Medidas de Seguridad.

LEA EL INSTRUCTIVO  
READ MANUAL




**! WARNING**

To prevent serious injury or death:

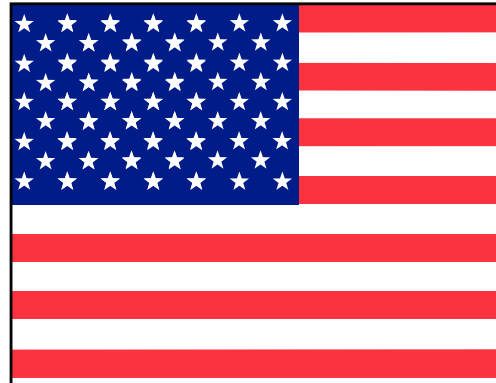
- Read and understand Operator's Manual before using. Review annually.
- Do not permit riders on the tractor or mower. Never carry children on tractor seat.
- Do not allow children to operate mower.
- Operate only with guards installed and in good condition.
- Keep away from moving parts.
- Operate only with tractor equipped with ROPS and seatbelts.
- Before mowing, clear debris from mowing area.
- Do not operate in the raised position.
- Stop engine, set brake and wait for all moving parts to stop before dismounting.
- Support mower securely before working beneath unit.
- Transport with clean reflectors, SMV and working lights as required by federal, state, and local laws.

**⚠ DANGER**



**ROTATING BLADES-KEEP AWAY**  
 To prevent serious injury or death when the engine is running and the blades are rotating:

- Never allow riders, especially children, on tractor or mower.
- Do not operate with bystanders in mowing area.
- Do not operate with deflectors/guards removed.
- Do not place hands or feet under deck.



**BLADE ROTATION**



**⚠ DANGER**



- Stay clear when removing transport strap and lowering or raising wing.
- Component failure or accidental operation of controls may allow wing to fall suddenly and cause **BODILY INJURY** or **DEATH**.
- Cylinders with  $\otimes$  Restrictions installed must be filled with oil for wings to lower slowly and safely.
- Lock wings up securely for transporting.
- Do not operate mower with wings raised when passersby are in the area.
- Contact with Exposed Rotating Blades and/or being hit by thrown objects may cause **INJURY** or **DEATH**.

**GREASE AS NEEDED**



**⚠ WARNING**

**NO RIDERS**

**NOTICE**

**Do not exceed 9-14 GPM**

Serial Number  
**0037751**

**NOTICE**

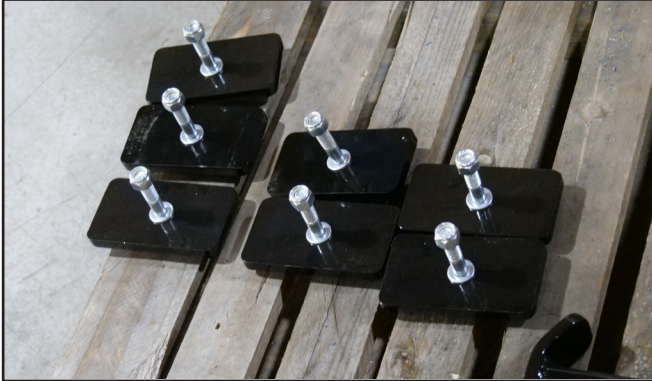
**Do not exceed 15-20 GPM**



## 4. Assembly (TB-FLEX & TB-FLEX JR)

The TrailBlazer Flex is shipped in three pieces: a roller assembly, mounting bracket assembly and deck assembly.

1) Remove the bolts, nuts and spacers from the roller assembly.



2) Place a spacer on the inside of the deck and run a bolt through the inside of the deck so the threads are on the outside of the deck.



3) Place the bolt through the corresponding hole on the roller assembly that is sticking out of the back of the deck, and start the nut to hold it in place. The roller should be towards the ground.



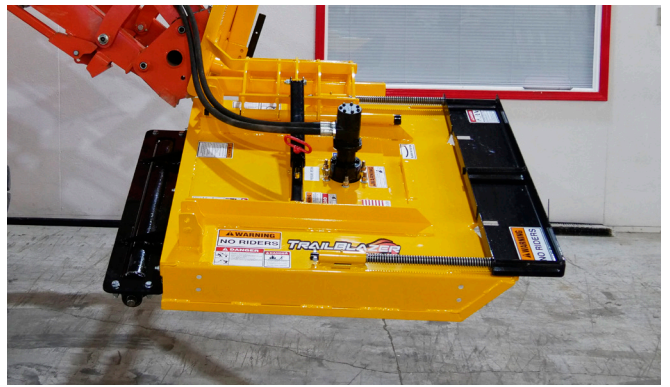
4) Repeat steps 2 and 3 for the other two holes.



5) Remove the roll pin from the shaft on the mounting bracket assembly, and remove the shaft. Keep this roll pin as it is needed in reassembly.



6) Rotate the mounting bracket assembly so the mounting plate is parallel to the deck and the back of the plate is to the rear of the deck.





## 4. Assembly (TB-Flex & TB-Flex JR)

7) Before connecting the mounting bracket to the deck assembly, ensure the 1.5 x 1.5 tube is securely connected to the deck assembly is inside of the 2x2 tube, which should be securely connected to the mounting bracket assembly. Once this is confirmed, move to step 8.



8) Line up the two tubes from the mounting plate hinge to the inside of the hinge from the deck assembly and feed the shaft through.



9) Install the roll pin.



## 5. Operation

### 5.1 Operating Safety

#### **WARNING**



#### **Crush Hazard**

The tractor should be equipped with a Roll Over Protective Structure (ROPS) and a seat belt. A crushing hazard can occur if the driver is ejected from the seat while the tractor is in motion. Fasten the seat belt whenever the tractor is moving.



#### **Roll Away Hazard**

Before leaving the tractor seat, make sure the engine is stopped, the transmission is placed in park, the key is removed, and the parking brake is set.



The weight of the tractor, plus the offset mower if it rolls onto a person, can cause serious crushing injury or death.



#### **Thrown Object Hazard**

Cutters can throw objects up to 300 feet. To avoid serious injury or death:

- 1) Keep all thrown object shielding in place.
- 2) Inspect area for potential thrown objects before cutting.
- 3) Do not operate offset mower with the deck raised.



#### **Thrown Object Hazard**

For non-agricultural use, OSHA, ASAE, SAE, and ANSI standards require the use of chain guards or other protective guards at all times.



#### **Stay Clear**

Clear the work area of all unnecessary people and obstructions to prevent personal injury.



#### **Blade Contact Hazard (hand)**

To avoid serious injury or death, keep away from rotating blades. Do not put hands under offset mower deck.



#### **Blade Contact Hazard (foot)**

To avoid serious injury or death, keep away from rotating blades. Do not put feet under offset mower deck.

### **SAFETY INSTRUCTIONS**

The following safety instructions are provided to help prevent injury or limit equipment damage.



#### **Train Unfamiliar Users**

It is the offset mower owner's responsibility to make sure any person using the offset mower, especially if it is loaned or rented, has been thoroughly trained on its proper and safe use.

Train all new users and review instructions annually with existing users.

Be certain only physically-able persons will use the offset mower.

Users who have not read and understood all operating and safety instructions are not qualified to use the offset mower.

Untrained users expose themselves and bystanders to possible serious injury or death.

If the elderly are assisting with the work, their physical limitations need to be recognized and accommodated.

Never allow children to operate equipment.

### 5.2 Work Area Safety

#### **SAFETY INSTRUCTIONS**

The following safety instructions are provided to help prevent injury or limit equipment damage.

Never operate the offset mower in darkness or foggy conditions where you cannot clearly see at least 300 feet in front and to the sides of the tractor and offset mower.

Make sure that you can clearly see and identify passersby, steep slopes, ditches, drop-offs, overhead obstructions, power lines, debris, and foreign objects. If you are unable to clearly see these type of items, stop operating the offset mower.

Do not operate the offset mower, or drive the tractor into material that is burning, or areas that recently burnt and may contain hot embers. Burning material, sparks, and coals could be thrown from the offset mower to areas of vegetation that might ignite.



## SAFETY INSTRUCTIONS

The following safety instructions are provided to help prevent injury or limit equipment damage.

Carry a fire extinguisher on the tractor at all times to extinguish possible fires encountered.

Do not operate the offset mower on a tractor with an under-frame exhaust.

Before turning, slightly raise the mower off the ground.

After the mower is hydraulically disengaged, the motor can free-wheel for several minutes. Stay clear of the blades until they come to complete stop.

Large, dense, or wet vegetation may need to be cut in two or more passes to achieve a uniform cut.

Stay alert and watch for trees, low hanging limbs, power lines, and other overhead obstacles as well as solid ground objects.

Avoid cutting in reverse.

### 5.3 Tractor Requirements

#### **WARNING**



#### **Tractor Owner/Operator Manual**

Always refer to the tractor owner's manual to ensure compatibility and maximum safety.

The tractor used to operate the offset mower must have the power capacity to lift, push, and hydraulically operate the offset mower.

Depending on the model the tractor will need either  
9 to 14 gpm of oil flow  
15 to 20 gpm of oil flow

The recommended tractor is a 3000 pound tractor with rear ballast (such as a mower deck) to offset the weight on the front of the tractor. Also, recommended is tractor tires that are "filled" or solid to prevent puncture from brush.

**This unit WILL NOT work on a skid steer machine.**

#### **WARNING**

Using the mower on a skid steer will void the warranty and have potential for serious injury to the user or bystanders.

Operating the offset mower with a tractor that does not meet the following requirements may cause tractor or offset mower damage and be a potential danger to the operator and passersby.

Always review the "controls" section of the tractor operator's manual to be familiar with the location, settings, and function of the tractor controls. Be familiar with all controls before using this equipment.

- Approved Roll-Over Protective Structure (ROPS) or ROPS cab and seat belt.
- Tractor Safety Devices; Slow Moving Vehicle (SMV) emblem, lighting.

### 5.4 Attaching to Tractor

Use caution when connecting the offset mower to the tractor. The offset mower should be securely resting at ground level or setting on blocks. Keep hands and feet from under the deck and clear of pinch points between the tractor hitch arms and offset mower hitch pins.

#### **WARNING**



#### **Crush Hazard**

Crush hazard between loader's quick attachment plate and mower. Do not allow anyone to stand between the loader and implement during hook-up operations.

1. Connect the mower to the loader arms.



2. Lock the mower to the lift arms.



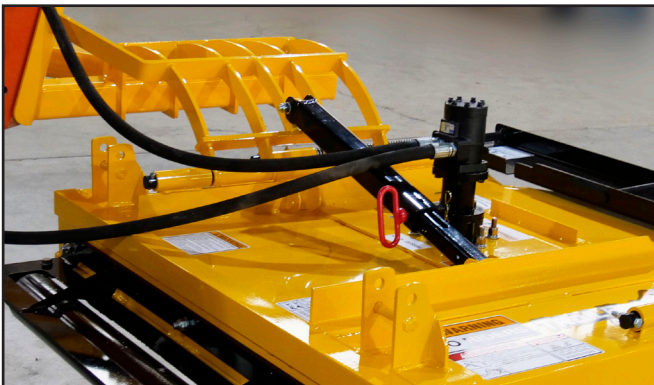
3. Turn OFF the tractor engine and disconnect.
4. Connect a user-supplied hydraulic supply hose from the tractor supply manifold valve to the hose routed to the right port of the hydraulic motor. The pump port configuration is from tractor's viewpoint.

**The hose MUST be 5/8 inch diameter. DO NOT use smaller or larger diameter hoses.**



5. Connect the left return port on the motor to a user supplied hose (5/8 inch diameter) routed to the tractor's reservoir.

The return hose must have free-flow back into the pump reservoir and not be ported through the tractor's manifold valve. DO NOT connect into the tractor's rear remote return valve.



**Note:** An optional Hose Kit is available consisting of two male QD couplings, two female QD couplings, two 5/8" diameter hoses, and two pump fittings.

6. Start the mower and check for rotation. Make sure the pump is turning in the correct rotation. Hooking up the hoses to the wrong port will make the cutters operate in a reverse direction.



**Do not put hands or feet under the offset mower deck while the blades are rotating.**

7. Place the mower in the desired cutting configuration.
  - a. Horizontal offset mowing configuration. (TB-Max)



- b. Vertical mowing configuration. (TB-Max)





8. Place the mower in the desired cutting configuration.

- a. Horizontal offset mowing configuration. (TB-Flex)



- b. Floating offset mowing configuration. (TB-Flex)



- c. Vertical mowing configuration. (TB-Flex)



### 5.5a Horizontal Offset Mowing Configuration (TB-Max & TB-Max JR)

- 1. Disconnect the supply hose from the tractor's manifold valve.



- 2. Disconnect both the supply and return hoses to the mower.



- 3. Place the ends of the hoses in a place they will not be contaminated by dirt.



- 4. Remove the left-side Clip and t-handle retaining pin.





5. Remove the left-side clip and t-handle retaining pin.



6. Push the right side of the mower deck back towards the tractor.



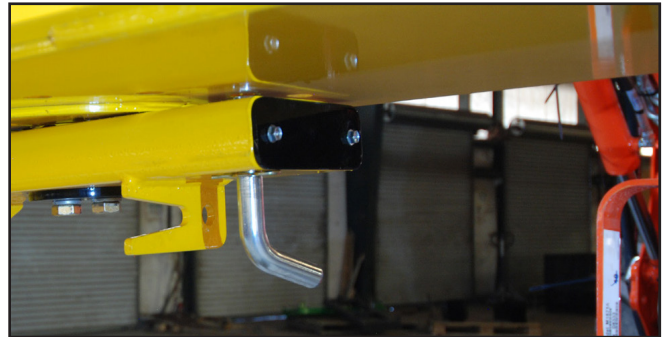
7. Push the left side of the mower deck back towards the tractor.



8. Pull the mower deck to the side of the tractor.



9. Remove the clip from the latch pin and position the mower parallel to the front of the tractor. The latch pin will engage with the hole in the skid plate. Replace the clip.



10. Replace the right-side t-handle retaining pin and clip.

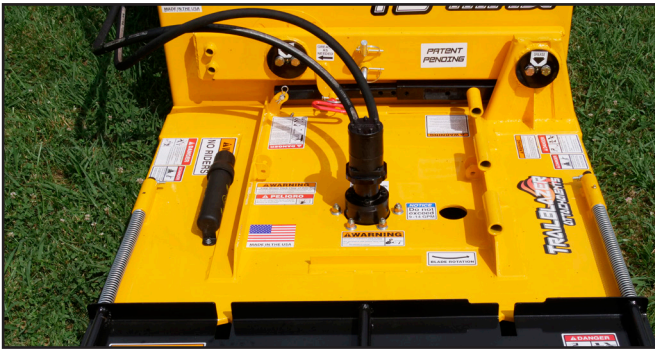




11. Replace the left-side t-handle retaining pin and clip.



12. Reconnect the hydraulic hoses.



13. Position the mower deck on the ground.



## Vertical Mowing Configuration

1. Begin by following Steps 1 through 8 of the Offset Mower configuration "5.5 Horizontal Offset Mowing Configuration" on page 26.
2. Position the mower deck 90 degrees to the front of the tractor. Reposition the retainer bar from the standard configuration into the side-mowing configuration.



3. Replace both t-handle retaining pins and clips. Reconnect the hydraulic hoses.





4. Reposition the mower deck for vertical mowing.



5. The mower deck can be positioned in four slanted configurations depending on the mowing application.



### 5.5b Offset Mowing Configuration (TB-Flex & TB-Flex JR)

1. Disconnect the supply hose from the tractor's manifold valve.



2. Disconnect both the supply and return hoses to the mower.



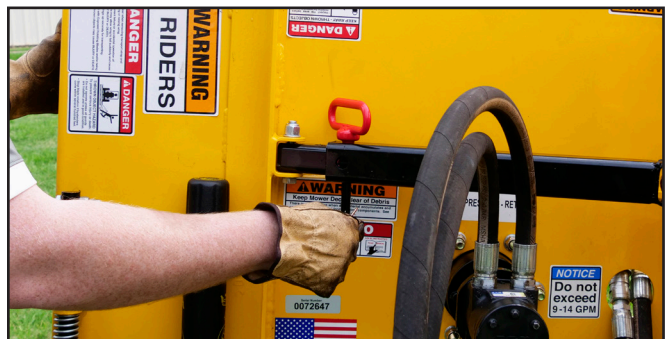
3. Place the ends of the hoses in a place they will not be contaminated by dirt.



4. Tilt the mower deck into the position as shown.



5. Remove the red-headed pin.





6. Adjust the deck to the desired position and place the pin into the hole. Notice that the holes on the top are for fixed positions, and the hole on the side is for the float position.



7. Use the top hole for the floating position.



8. Reconnect supply hoses to the mower and to the tractor.





## 5.6 Detaching from Tractor

1. Place the mower flat on the ground. If a perpendicular configuration was used, place the mower in a flat configuration before disconnecting it.
2. Shut off the tractor, set the parking brake, and remove the key.
3. Operate the tractor's hydraulic levers to release all pressure.
4. Unhook the supply (pressure) hose from the rear of the tractor (manifold valve).
5. Unhook both hose quick disconnect fittings at the front of the tractor. Make sure the fittings are kept clean.
6. Lower parking stand (when applicable)
7. Release the locking latches and detach the lift arms from the mower.

## 5.7 Mower Checklist

Efficient and safe operation of the offset mower requires that every user read and understand the operational instructions and all related safety instructions outlined in this manual.

This Initial Setup Checklist is provided for the user/owner. It is important for both personal safety and to maintain the mechanical condition of the offset mower that this checklist is followed.

1. Although there are no operational restrictions on the offset mower when used for the first time, it is recommended that the following mechanical items be checked:
  - a. After 1/2 hour of operation:  
Tighten all fasteners if necessary.  
Lubricate all grease fittings.
  - b. After 10 hours of operation:  
Go to the normal servicing and maintenance schedule, as defined in the Maintenance Section.

2. Before each use of the offset mower, the following areas should be checked.

<b>Mower Checklist Before Each Use</b>	
<input type="checkbox"/>	<b>Task</b>
	Initially, retighten the tapered roller bearing in the pivot arm after 15 minutes of initial use and again at 30 minutes. Recheck again before the next use.
	Make sure the offset mower is positively attached to the tractor.
	Use only an appropriately sized tractor. Refer to "5.3 Tractor Requirements" on page 24.
	Make sure the hydraulic hose is properly attached to the tractor.
	Make sure all safety shields and guards are properly installed.
	Check the blade bolts and blade carrier nut.
	Check the condition of the blades.
	Inspect the overall offset mower for potential problems or damage. Do not use the offset mower if it needs repairs of any type.

## 5.8 Operation Checklist

Although the offset mower is easy to use, each operator should review this section to familiarize themselves with the detailed safety and operating procedures. When using this machine, follow this procedure:

Mowing Area Checklist Before Each Use	
<input type="checkbox"/>	Task
<input type="checkbox"/>	Clear an area of at least 300 feet on all sides of bystanders, especially small children.
<input type="checkbox"/>	Operate the offset mower only in conditions where you have clear visibility in daylight.
<input type="checkbox"/>	Inspect and clear the area to be cut of stones, branches, debris, and any hard objects that may be thrown.
<input type="checkbox"/>	Mark the location of objects that cannot be removed.
<input type="checkbox"/>	Make sure all safety shields and guards are properly installed.
<input type="checkbox"/>	Check the blade bolts and blade carrier nut.
<input type="checkbox"/>	Check the condition of the blades.
<input type="checkbox"/>	Begin cutting at a slow speed, then increase to a speed that gives a clean cut without lugging the engine. Do not operate above 5 MPH.
<input type="checkbox"/>	Never allow blades to contact solid objects like rocks, posts, wire, curbs, guardrails, or the ground while mowing.
<input type="checkbox"/>	Avoid operating the offset mower in reverse direction when possible. Check to make sure there are no persons behind the offset mower, and use extreme care when maneuvering in reverse.

## 5.9 Right of Way (Roadway) Mowing

Use all safety shields for highway, right-of-way, parks, greenbelt mowing, or all other mowing where human dwellings, vehicles, or livestock could be within 300 feet of the offset mower.

**No shielding is 100% effective in preventing thrown objects. To reduce the possibility of injury:**

1. Maintain offset mower shielding in good operational condition.
2. Inspect the condition of the thrown object guards, offset mower side skirts, and skid shoes daily: Replace or repair worn or damaged guards.
3. Inspect the condition of the blades and blade bolts daily. Replace any cracked, worn, bent, or damaged blades. Always replace blade bolts and lockwashers when replacing blades. Make sure the blade bolts are properly tightened.
4. Never allow blades to contact solid objects like rocks, posts, wire, curbs, guardrails, or the ground while mowing.

**Offset mowers can throw objects 300 feet or more under adverse conditions.**

1. To avoid serious injury or death from thrown objects, inspect the area thoroughly for potential thrown objects and remove them before cutting.
2. Remove debris, rocks, wire, cable, metal objects, and other foreign material from mowing area.
3. Wire, cable, rope, chains, and metal objects can be thrown or swung outside the deck with great velocity:
4. Mark the location of objects that cannot be removed.

**Stop mowing if passersby are within 300 feet unless:**


1. All thrown object shielding, including front and rear deflectors, chain guards, steel guards, bands, side skirts, and skid shoes are in place and in good condition when mowing.
2. Mower sections or wings are adjusted to be close and parallel to the ground without exposing the blades.
3. Mowing area has been inspected and foreign materials and debris have been removed.
4. Passersby are inside an enclosed vehicle.


## 6. Transporting


### 6.1 Transporting Safety (Road)


#### **WARNING**



The following safety instructions can and will result in serious injury and possibly even death if they are not understood and followed.


 **Tractor Owner/Operator Manual**  
Always refer to the tractor owner's manual to determine its compatibility and maximum safety.



 **Operating the Tractor**  
Before attaching the offset mower to the tractor, be familiar with its controls and how to stop it quickly in the event of an emergency. Read and understand this manual and the one provided with your tractor before transporting the offset mower.

 **Fall and Crush Hazard**  
Do not allow riders on the offset mower or tractor.

 **Maximum Transporting Speed**  
Do not exceed 20 MPH when transporting the offset mower. Slow down for corners and rough terrain.

  **Visibility**  
Clean reflectors, SMV or SIS sign, and lights before towing. Make sure all the lights and reflectors required by highway and transport authorities are in place and can be seen clearly by all overtaking and oncoming traffic.


 **Regulations**  
Make sure all local, state, and federal regulations, regarding the transport of equipment on public roads and highways, are met. Check with the local authorities regarding transporting the offset mower on public roads. Obey all applicable laws and regulations.


  **Rollover Protection**  
The tractor should be equipped with a Roll Over Protective Structure (ROPS) and a seat belt.

#### **SAFETY INSTRUCTIONS**


The following safety instructions are provided to help prevent injury or limit equipment damage.


 **Drive Safely**  
Be a safe and courteous driver. Anticipate what other drivers will do and drive accordingly.

 **Allow Extra Distance**  
Apply brakes early. Leave extra distance between your vehicle and the one(s) ahead to provide adequate stopping space. Extra distance will be required to stop the vehicle.


 **Clear Vision**  
Remove all objects from the area that would prevent clear vision of the complete work area or would present an obstacle when moving the offset mower.

 **Hitch Attachment**  
Be sure the offset mower is securely attached to the tractor and in good operating condition before using.

 **Working Taillights**  
Make sure lights on the tractor are working properly.

 **Additional Lighting**  
For offset mowers without lights, install additional lights on the rear of the tractor to safeguard against rear-end collisions. Daybreak and dusk are particularly dangerous and rear pilot vehicles are recommended. Offset mowers without lights should be transported on public roads only during daylight hours.

 **Hazard Flashers**  
Use hazard flashers on the tractor when transporting unless prohibited by law.

 **Right-of-Way**  
When traveling below the posted speed limit, keep to the right and yield the right-of-way to allow faster traffic to pass.



## 7. Storage

---

### 7.1 Storage Safety

At the end of the season, the offset mower should be thoroughly inspected and prepared for storage. Repair or replace any worn or damaged components to prevent any unnecessary downtime at the beginning of the next season.

#### **CAUTION**



#### **Personal Injury Hazard**

Store the offset mower in an area away from human activity. To prevent the possibility of serious injury, do not permit children to play on or around the stored offset mower.

---



#### **Crush Hazard**

Always set the offset mower on safety stands or on blocks for storage.

---

#### **NOTICE**

*To prevent damage to the offset mower, store it in a dry, level area.*

---

### 7.2 Placing In Storage

1. Remove all entangled vegetation.
2. Thoroughly wash the offset mower with a pressure washer or water hose to remove all clippings, dirt, mud, or debris.
3. Select an area that is dry, level, and free of debris (inside a building is ideal). Move the offset mower to its storage area.
4. Lubricate all grease points. Make sure all grease cavities have been filled with grease to remove any water residue from washing.
5. Touch up all paint nicks and scratches to prevent rusting.

### 7.3 Removing From Storage

When removing the offset mower from storage, follow this procedure:

1. Attach the offset mower to the tractor lift arms.
2. Raise the offset mower up off the blocks.
3. Before placing the offset mower back into service, replace any worn or defective parts and perform the Pre-Operation Checklist.

## 8. Service and Maintenance

---

### 8.1 Maintenance Safety

#### **WARNING**

Failure to comply with the following safety instructions can and will result in serious injury and possibly even death.

---



**Personal Protection Equipment** Wear close fitting and belted clothing to avoid getting caught in moving parts. Wear personal protection equipment (PPE), which may include hard hat, safety glasses, safety shoes, gloves, etc. appropriate for the work site and working conditions.

---



#### **Damaged Parts Hazard**

Do not use the offset mower if any parts are damaged. If the offset mower is believed to have a defect which could cause it to work improperly, immediately stop using it and remedy the problem before continuing.

---



#### **No Unauthorized Modifications**

Do not modify the offset mower or safety devices. Do not weld on the unit. Unauthorized modifications may impair its function and safety and will void the warranty.

---

If the offset mower has been altered in any way from the original design, the manufacturer does not accept any liability for injury or warranty.

---



#### **Crush Hazard**

Always set the offset mower on safety stands or on the ground when performing maintenance.

---



#### **Good Working Condition**

Keep all parts in good condition and properly installed. Fix damage immediately. Replace worn or broken parts.

---



#### **Replacement Parts**

If replacement parts are necessary, genuine factory replacement parts must be used to restore the unit to its original specifications. Trailblazer will not accept responsibility for damages as a result of the use of unapproved parts.

---



#### **Safety Shields and Devices**

When completing a maintenance or service function, make sure all safety shields and devices are installed before placing the offset mower in service.

---

## 8.2 Greasing

Grease all zerks according to the schedule in “8.6 Service Record” on page 38. Use an SAE multipurpose high-temperature grease with extreme pressure (EP) performance. Also acceptable is an SAE multipurpose lithium base grease.

1. Always use a handheld grease gun for all greasing.
2. Wipe grease zerks with a clean cloth before greasing to avoid injecting dirt and grit.
3. Apply grease until new grease can be seen coming out of the joint.
4. Do not let excess grease collect on or around parts, particularly when operating in sandy areas.
5. Replace and repair broken grease zerks immediately.
6. If any grease zerk will not take grease, remove and clean it thoroughly. Also, clean the lubricant passageway. Replace the zerk if necessary.

## 8.3 Blade Servicing

Inspect blades before each use to determine that they are properly installed and in good condition. If any blade is bent, excessively nicked, worn, or has any other damage, replace both blades. **Do not sharpen the blades.** The blades have two cutting edges and should be flipped when the first edge is dull or damaged.

Manually wiggle the blade carrier to check for any looseness. Recheck torque every fifty hours. Retighten any loose parts.

### 8.3.1 Blade Removal

To remove blades, remove the nut and lockwasher from the blade bolt through the inspection hole in the deck of the mower near the motor.



### 8.3.2 Blade Installation

When installing blades, be sure to check the blade bolt pivot diameter for wear. Replace the bolt if worn more than 1/4 inch at any point. Tighten nut to 600 ft. lbs.

Always use a new lockwasher and nut when replacing the blade bolt. Make sure blades are installed with the cutting edge in the direction of rotation. Rotation is counterclockwise as viewed from above the deck.

### 8.3.3 Blade Sharpening

#### **DO NOT SHARPEN THE BLADES.**

The mower blades are two-sided and can be flipped over once to create a new cutting edge. Once both cutting edges have been used the blades **MUST** be replaced.

## 8.4 Blade Carrier Removal

1. Remove the cotter pin and loosen the castle nut on the gearbox shaft. Do not remove the nut until the blade carrier is loosened.
2. Use a suitable two jaw gear puller to pull the carrier off the tapered gearbox shaft.
3. If a gear puller is not available, insert a bar through the blade bolt the access hole with the end against the blade carrier. Strike the opposite end of the bar sharply. Rotate the blade carrier 180 degrees and repeat until the carrier breaks loose.
4. Remove the castle nut and the blade carrier.

## 8.5 Blade Carrier Installation

1. Clean the splines on both the blade carrier and the output shaft.
2. Position the carrier on the gearbox output shaft and install the castle nut. Tighten the nut to a minimum 450 ft. lbs.
3. Strike the carrier near the hub several times with a heavy hammer to seat the hub. Use care not to strike the nut or the end of the shaft.
4. Retighten the nut to 700 ft. lbs. Install the cotter pin and spread the tangs.



## 8.6 Service Record

The period recommended is based on normal operating conditions. Severe or unusual conditions may require more frequent lubrication or oil changes.

Copy this page to continue record.

Hours and Serviced By																				
<b>Maintenance</b>																				
<b>Every 8 Hours</b>																				
Make sure blade bolts are tightened to proper torque.																				
Make sure all retainer clips and cotter pins are in place.																				
Inspect the cutting blades for wear and damage.																				
Grease all lubrication points.																				
<b>Every 50 Hours</b>																				
Check blade carrier nut torque.																				
<b>Annually</b>																				
Make sure all fasteners are properly tightened.																				
Check mower deck, motor, and hoses for damage.																				
Inspect the cutting blades for wear and damage.																				
Wash the offset mower.																				

## 8.7 Welding Repairs



Before performing any type of welding repair to the offset mower, contact Trailblazer for approval. Repair welding must be done with care and with procedures that may be beyond the capabilities of the ordinary welder.

### **WARNING**



#### **Projectile Hazard**

Do not attempt to weld on the blades. They are hardened and will crack or otherwise be damaged, causing failure and possible serious injury or death from thrown blades.



#### **Personal Injury Hazard**

Repairs or modifications to the offset mower can result in serious injury or death should these repairs fail.

### **NOTICE**

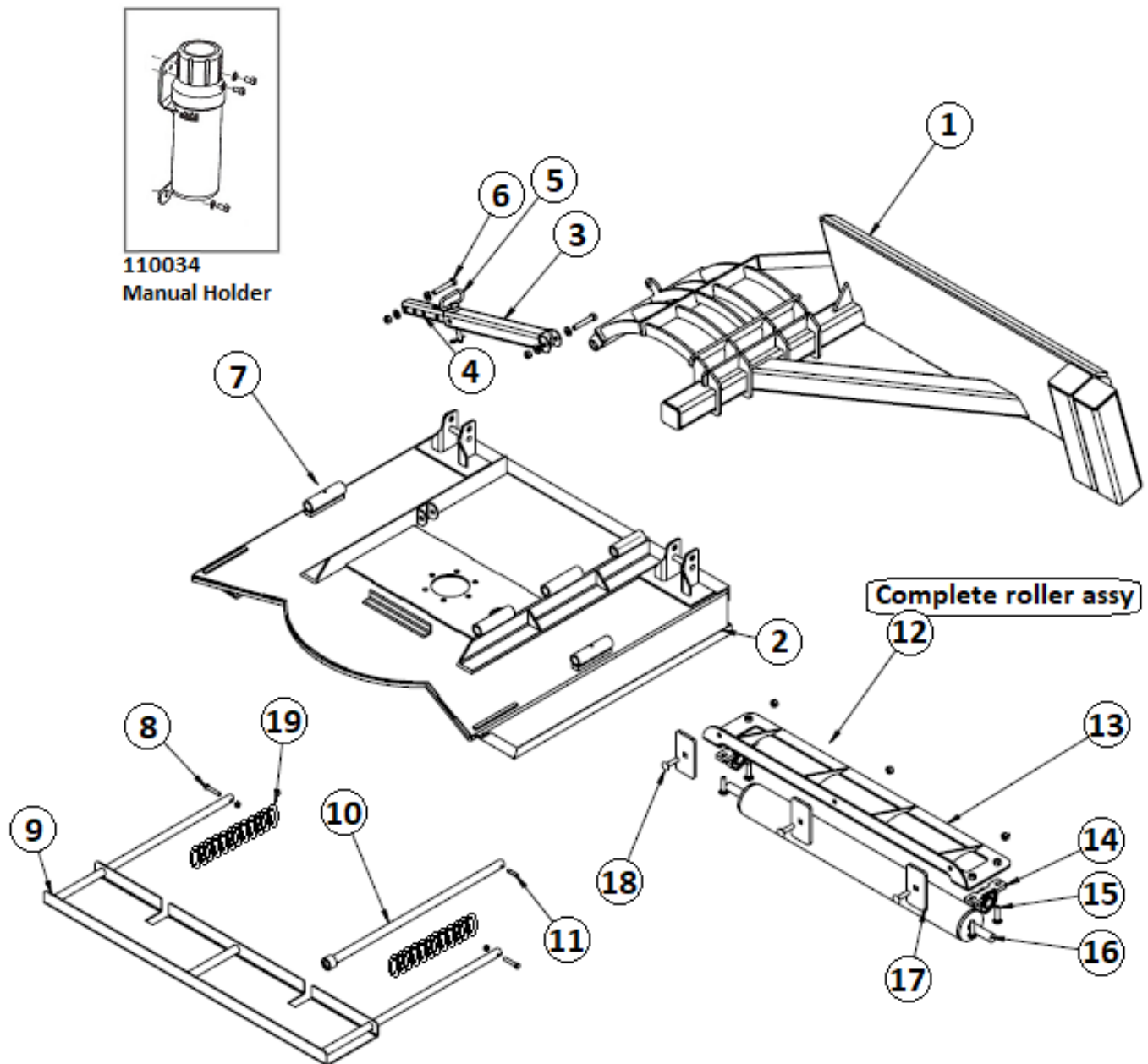
Anyone performing a welding repair should be certified in accordance with the American Welding Society (AWS) standards.

## 9. Parts - TB-FLEX & TB-FLEX JR

Replacement parts are available from your authorized Dealer Parts Department or from Trailblazer.

The following pages contain a list of serviceable parts for the Trailblazer offset mower.

### TB-Flex 44" Deck Components



## TB-Flex 44" Deck Components

Item	Part #	Description	Qty
1	620043	TB-FLEX SSQA HITCH	A/R
	620044	TB-FLEX JOHN DEERE 400/500 HITCH	A/R
	620045	TB-FLEX EURO GLOBAL HITCH	A/R
2	620037	TB-DECK 44"	1
3	620084	ADJUSTMENT TUBE – 2"	1
4	620085	ADJUSTMENT TUBE – 1-1/2"	1
5	620007	T-HANDLE PIN WITH R-CLIP 1/2" x 3-5/8"	1
6	620088	BOLT, WASHER & NUT 1/2" x 3"	2
7	110021	GREASE ZERK 5/16"	2
8	620018	SAFETY SPRING RETAINING BOLT & NUT 3/8" X 2"	2
9	620016	SAFETY SHIELD	1
10	620011	PIVOT ARM CONNECTING ROD	1
11	620012	ROLL PIN 3/8" x 1-1/2"	1
12	620114	COMPLETE ROLLER ASSY	1
13	620086	ROLLER BRACKET	1
14	810110	PILLOW BLOCK BEARING – 1"	2
15	110069	BOLT & NUT KIT 1/2" x 2" (4-Pack)	1
16	620087	ROLLER	1
17	620047	ROLLER SUPPORT PLATE	2
18	110069	BOLT & NUT KIT 1/2" x 2" (4-Pack)	1
19	620017	SAFETY SHIELD SPRING	2

Note: A/R = As Required

### \* NOT SHOWN

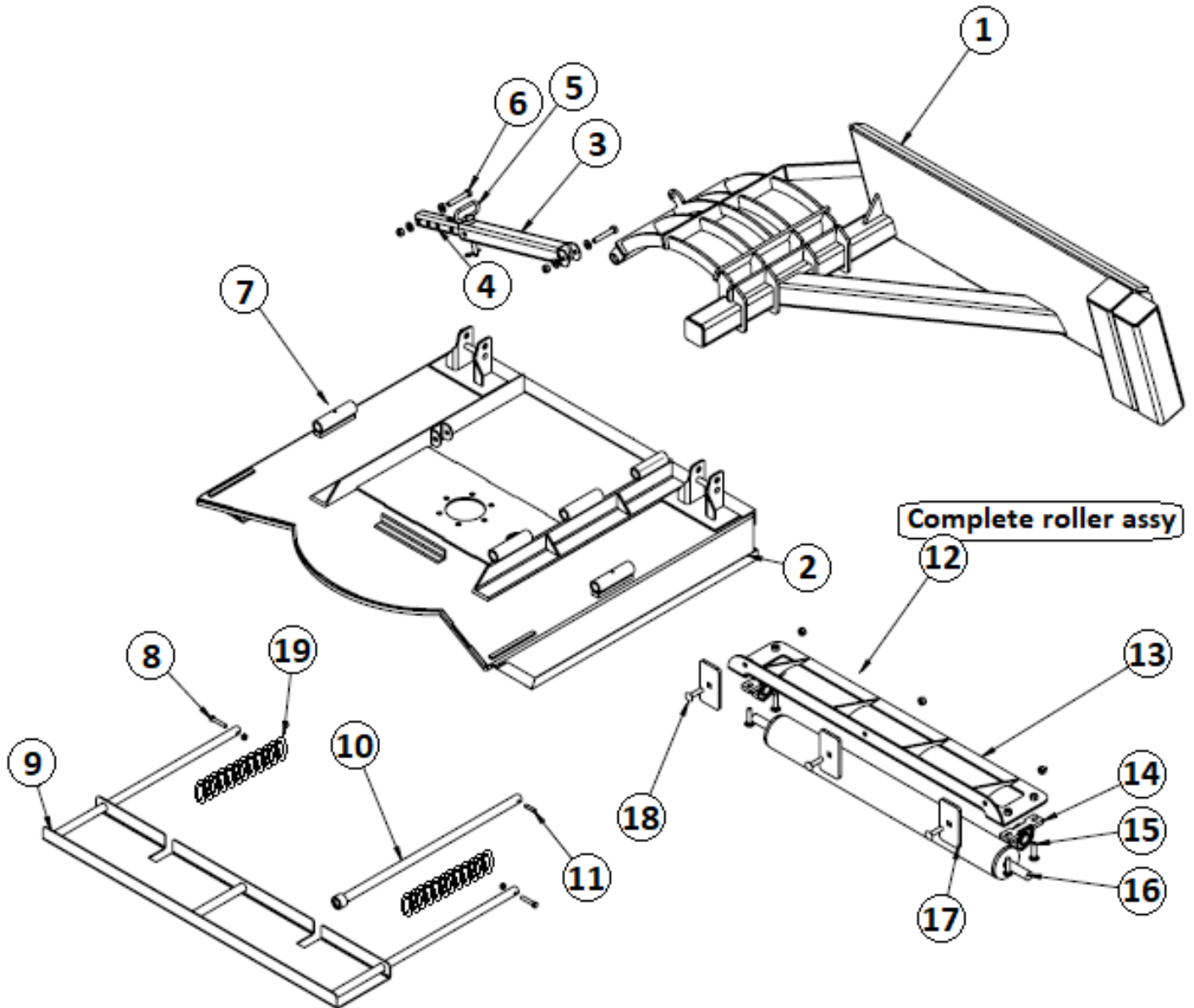
*	TB1MHK	6-ft Hose Kit with ORB Fittings & 2 Male/Female Quick Disconnect Ag Coupling
*	TBHK166	22-ft Hose Kit (16'+6') with ORB Fittings, Quick Couplers & 1/2" Return Fittings
*	TBHK206	26-ft Hose Kit (20'+6') with ORB Fittings, Quick Couplers & 1/2" Return Fittings



## 9. Parts - TB-FLEX & TB-FLEX JR (Continued)

Replacement parts are available from your authorized Dealer Parts Department or from Trailblazer.

### TB-Flex 32" Deck Components



## TB-Flex 32" Deck Components

Item	Part #	Description	Qty
1	620100	TB FLEX Jr. - SSQA HITCH	A/R
	620101	TB FLEX Jr. - JD 400/500 HITCH	A/R
2	620104	32" DECK ONLY W/DECALS	1
3	620105	ADJ. TUBE - FEMALE	1
4	620106	ADJ. TUBE - MALE	1
5	620007	T-HANDLE PIN WITH R-CLIP 1/2" x 3-5/8"	1
6	620088	BOLT, WASHER & NUT 1/2" x 3"	2
7	110021	GREASE ZERK 5/16"	2
8	620018	SAFETY SPRING RETAINING BOLT & NUT 3/8" X 2"	2
9	620107	SAFETY SHIELD	1
10	620108	HINGE ROD	1
11	620012	ROLL PIN 3/8" x 1-1/2"	1
12	620115	TB FLEX Jr. – 32" ROLLER ASSEMBLY	1
13	620110	ROLLER BRACKET	1
14	810110	PILLOW BLOCK BEARING – 1"	2
15	110069	BOLT & NUT KIT 1/2" x 2" (4-Pack)	1
16	620111	ROLLER	1
17	620047	ROLLER SUPPORT PLATE	2
18	110069	BOLT & NUT KIT 1/2" x 2" (4-Pack)	1
19	620112	SAFETY SHIELD SPRING	2

Note: A/R = As Required

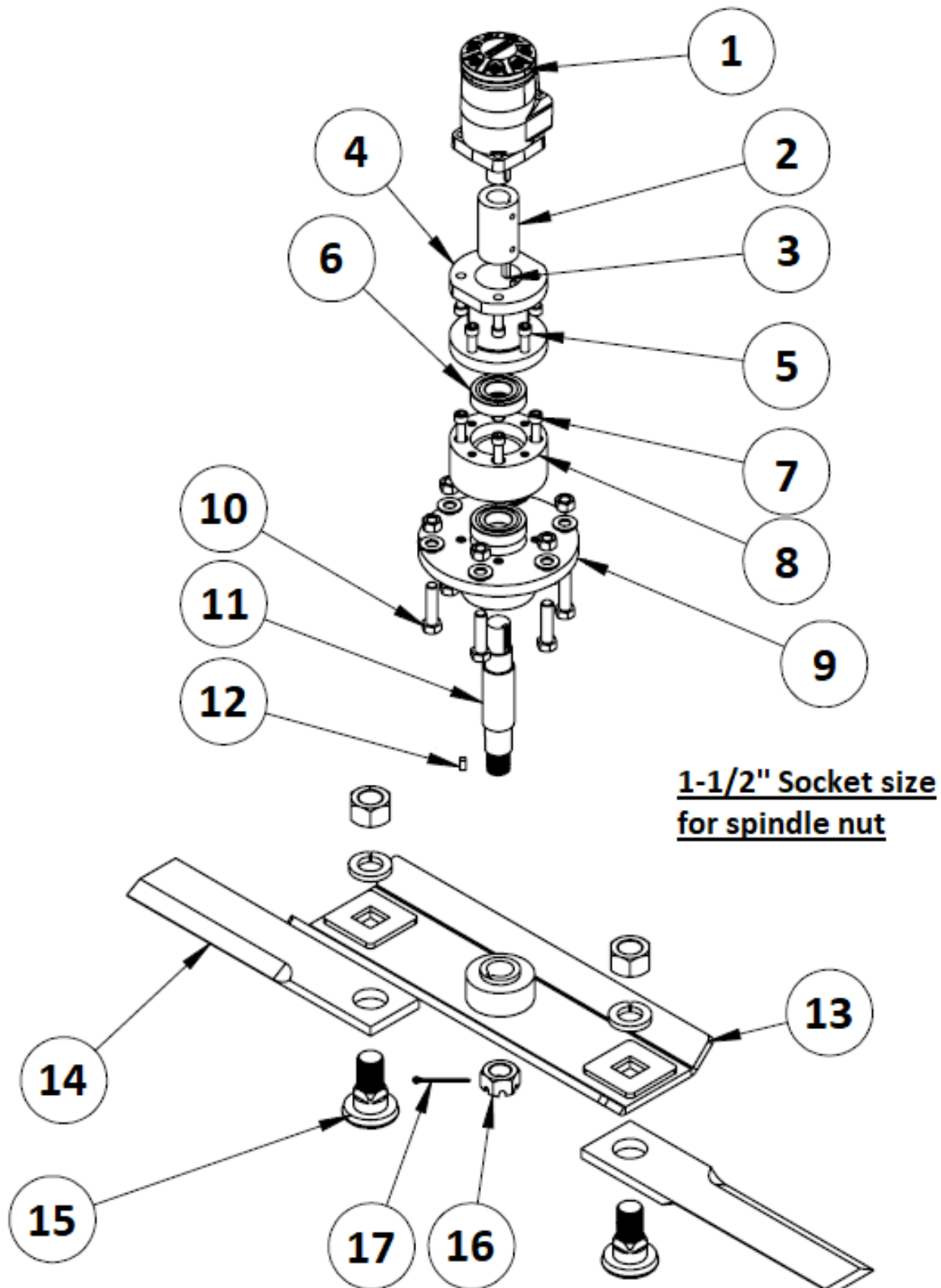
### \* NOT SHOWN

*	TB1MHK	6-ft Hose Kit with ORB Fittings & 2 Male/Female Quick Disconnect Ag Coupling
*	TBHK166	22-ft Hose Kit (16'+6') with ORB Fittings, Quick Couplers & 1/2" Return Fittings
*	TBHK206	26-ft Hose Kit (20'+6') with ORB Fittings, Quick Couplers & 1/2" Return Fittings

## 9. Parts - TB-FLEX & TB-FLEX JR (Continued)

Replacement parts are available from your authorized Dealer Parts Department or from Trailblazer.

### Motor Assembly





## Motor Assembly

Item	Part #	Description	Qty
1	620019	MOTOR 9-14 GPM	A/R
	620020	MOTOR 15-20 GPM	A/R
2	620023	COLLAR	1
	620024	SET SCREW 3/8" X 0.375"	1
	620025	SET SCREW 3/8" X .025"	1
3	620028	KEYWAY 1/4" X 1.25"	1
4	620021	MOTOR SPACER	1
5	620022	SOCKET HEAD SCREW 3/8" X 1"	4
6	620027	HUB BEARING 6206-2RS	2
7	620082	SOCKET HEAD SCREW 3/8" X 2"	4
8	620049	TOP HUB	1
9	620048	BOTTOM HUB	1
10	620083	BOLT, NUT & FLATWASHER 1/2" X 2"	6
11	620090	SPINDLE	1
12	620030	KEYWAY 1/4" X .50 "	1
13	620036	BLADE CARRIER FOR TB-FLEX 44"	1
	620109	BLADE CARRIER FOR TB-FLEX Jr. 32"	1
14	TB-44	CUTTER BLADE (Sold in Pairs) – FOR 44"	1
	TB-32	CUTTER BLADE (Sold in Pairs) – FOR 32"	1
15	110012	BLADE BOLT KIT (Sold in Pairs)	1
16	620033	BLADE CARRIER NUT 1"-12 LH THREAD	1
17	620034	COTTER PIN 1/8" X 2.25"	1

Note: A/R = As Required

### **\* 620130 Hub & Spindle (Complete Kit)**

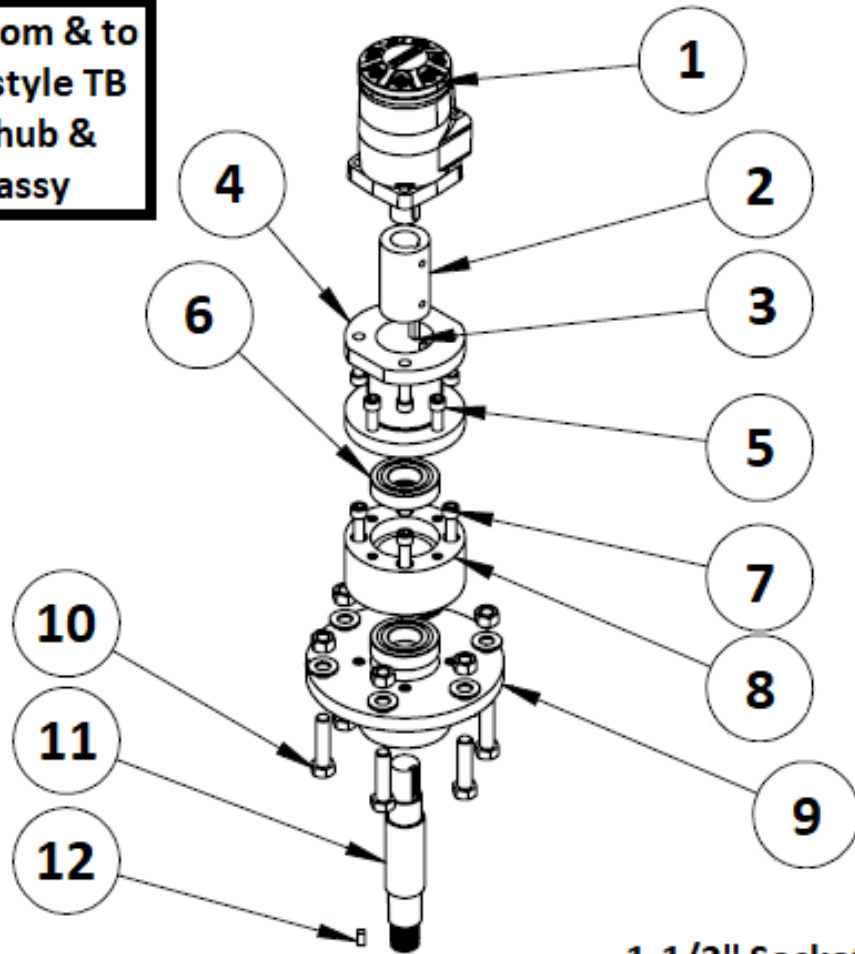
**Includes Items: 2,3,4,5,6,7,8,9,10,11,12,16,17**

## 9. Parts - TB-MAX & TB-MAX JR

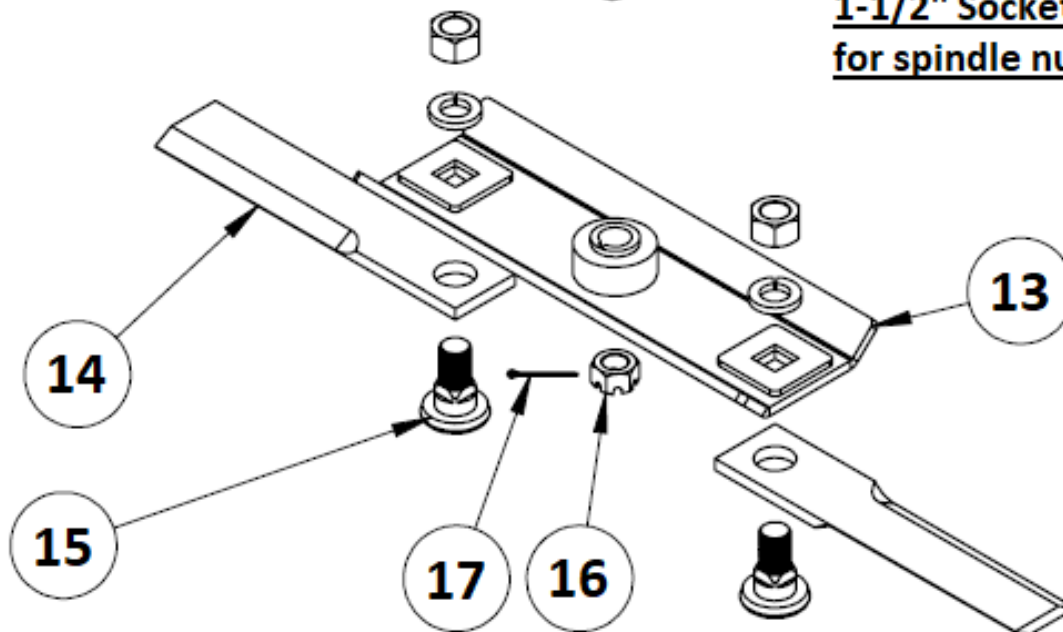
Replacement parts are available from your authorized Dealer Parts Department or from Trailblazer.

### Motor Assembly

Units made from & to have the old style TB  
One spindle, hub &  
blade carrier assy



1-1/2" Socket size  
for spindle nut



1-11/16 Socket size for blade bolt nut

# Motor Assembly

Item	Part #	Description	Qty
1	620019	MOTOR 9-14 GPM	A/R
	620020	MOTOR 15-20 GPM	A/R
2	620023	COLLAR	1
	620024	SET SCREW 3/8" X 0.375"	1
	620025	SET SCREW 3/8" X .025"	1
3	620028	KEYWAY 1/4" X 1.25"	1
4	620021	MOTOR SPACER	1
5	620022	SOCKET HEAD SCREW 3/8" X 1"	4
6	620027	HUB BEARING 6206-2RS	2
7	620082	SOCKET HEAD SCREW 3/8" X 2"	4
8	620049	TOP HUB	1
9	620048	BOTTOM HUB	1
10	620083	BOLT, NUT & FLATWASHER 1/2" X 2"	6
11	620090	SPINDLE	1
12	620030	KEYWAY 1/4" X .50 "	1
13	620036	BLADE CARRIER FOR TB-FLEX 44"	1
	620109	BLADE CARRIER FOR TB-FLEX Jr. 32"	1
14	TB-44	CUTTER BLADE (Sold in Pairs) – FOR 44"	1
	TB-32	CUTTER BLADE (Sold in Pairs) – FOR 32"	1
15	110012	BLADE BOLT KIT (Sold in Pairs)	1
16	620033	BLADE CARRIER NUT 1"-12 LH THREAD	1
17	620034	COTTER PIN 1/8" X 2.25"	1

Note: A/R = As Required

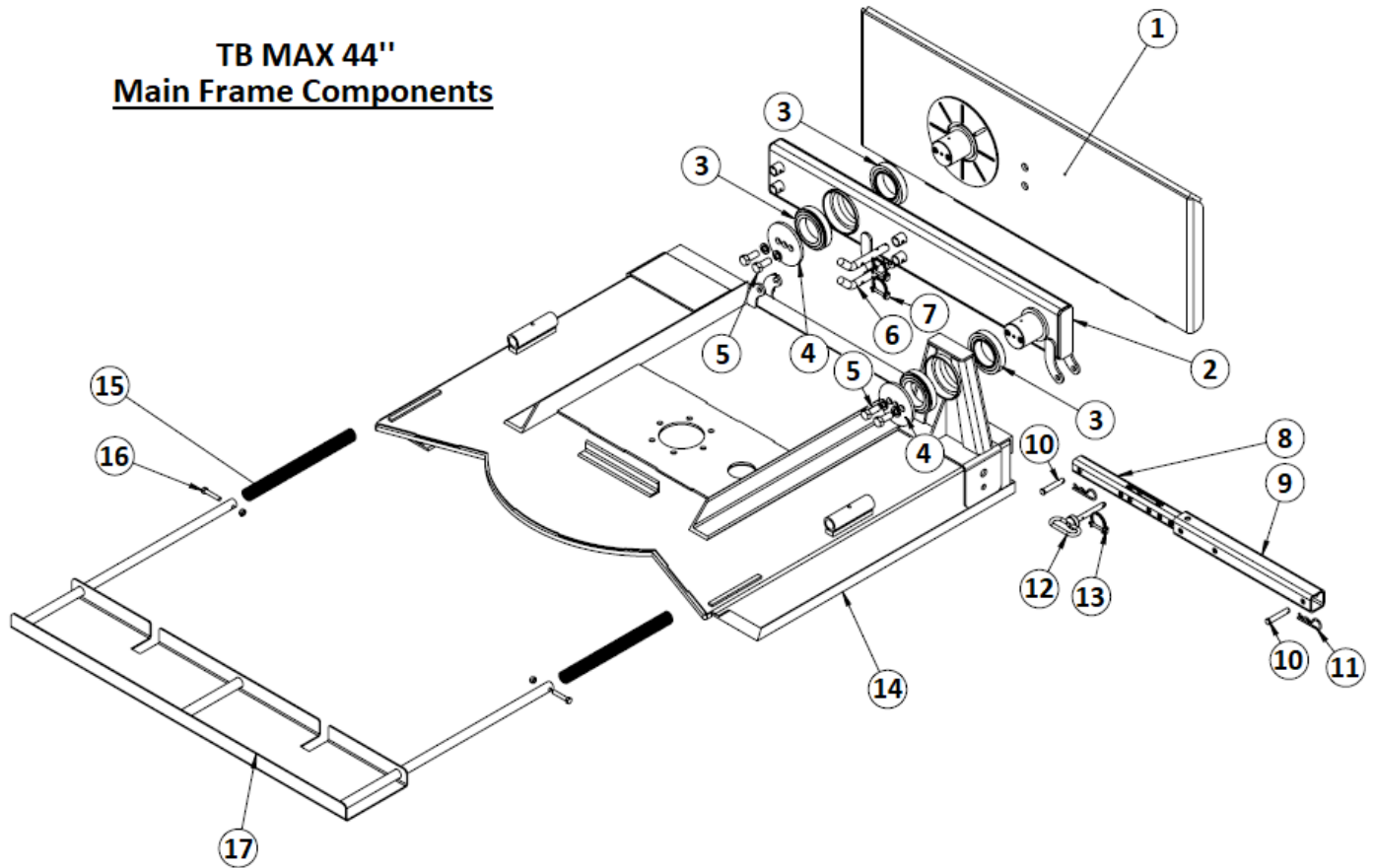
## **\* 620130 Hub & Spindle (Complete Kit)**

**Includes Items: 2,3,4,5,6,7,8,9,10,11,12,16,17**



## 9. Parts - TB-MAX & TB-MAX JR (Continued)

Replacement parts are available from your authorized Dealer Parts Department or from Trailblazer.



# Main Frame Components

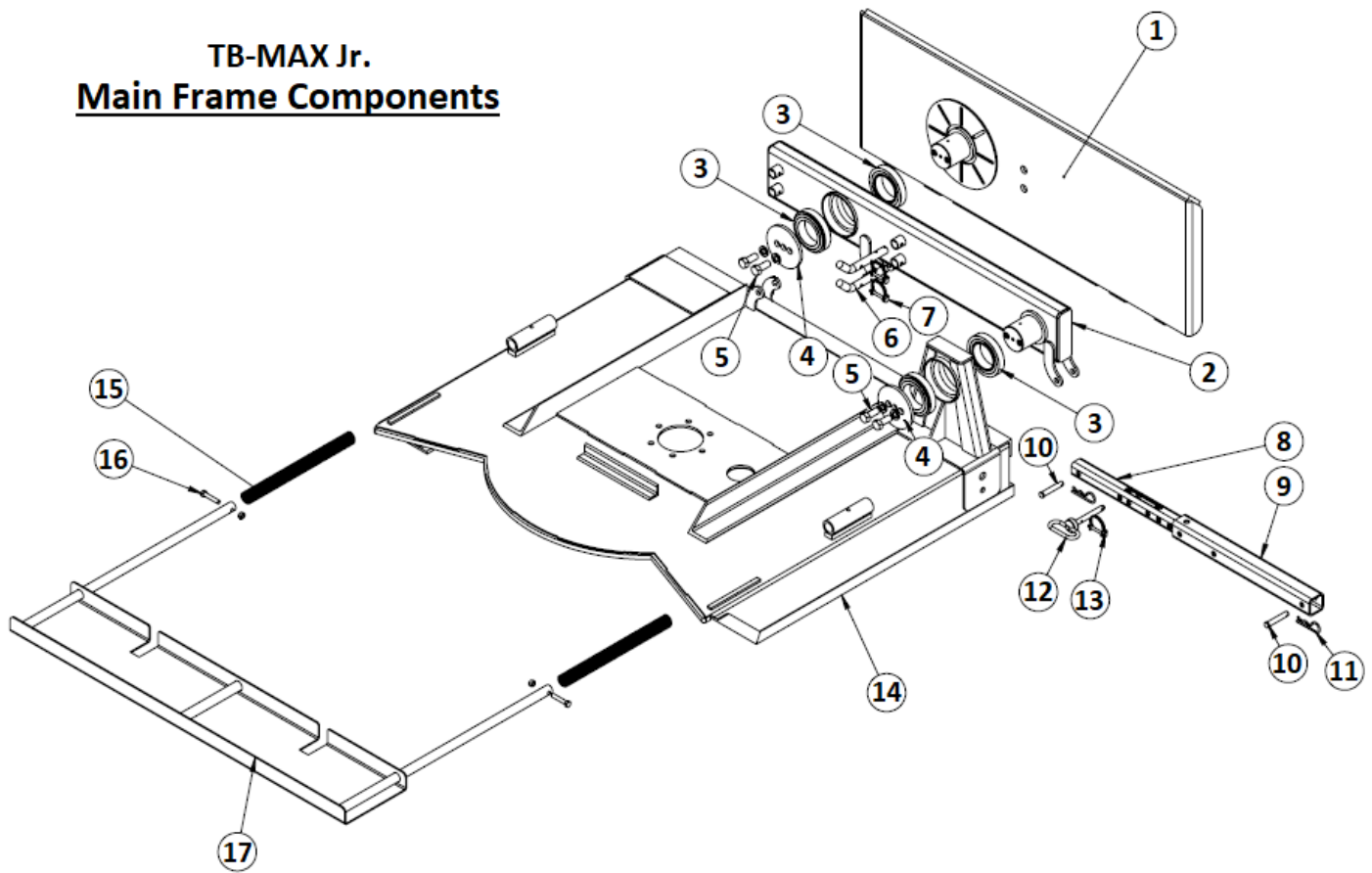
Item	Part #	Description	Qty
1	620120	TB-ULTIMATE (SSQA HITCH) Shown	A/R
	620121	TB-ULTIMATE (JD 400/500 HITCH) Not Shown	A/R
	620122	TB-ULTIMATE (EURO GLOBAL HITCH) Not Shown	A/R
	620123	TB-ULTIMATE (UNIVERSAL PIN ON HITCH) Not Shown	A/R
2	620127	TB-ULTIMATE SWING ARM	1
3	620005	PIVOT ARM BRG & CUP	4
4	620038	BEARING CAP	2
5	620095	BOLT & LOCKWASHER 5/8" X 1-1/2" Gr.8	4
6	620094	3/4" LOCK PIN	2
7	620093	WIRE LOCK CLEVIS PIN 1/4" X 2-3/8"	2
8	620126	FLOAT TUBE-INNER 1-1/2" Sq.	1
9	620125	FLOAT TUBE OUTER 2" Sq.	1
10	620091	CLEVIS PIN 1/2"	2
11	620092	R-CLIP	2
12	620096	T-HANDLE PIN W/R-CLIP	1
13	620092	R-CLIP	1
14	620124	TB-ULTIMATE DECK W/DECALS	1
15	620017	SAFETY SHIELD SPRING	2
16	620018	BOLT & LOCKNUT 3/8" X 2" Gr.2	2
17	620016	SAFETY SHIELD	1

Note: A/R = As Required

## 9. Parts - TB-MAX & TB-MAX JR (Continued)

Replacement parts are available from your authorized Dealer Parts Department or from Trailblazer.

### **TB-MAX Jr. Main Frame Components**





## TB-MAX Jr. Main Frame Components

Item	Part #	Description	Qty
1	620120	TB-ULTIMATE Jr. (SSQA HITCH) Shown	A/R
	620121	TB-ULTIMATE Jr. (JD 400/500 HITCH) Not Shown	A/R
2	620140	TB-ULTIMATE Jr. SWING ARM	1
3	620005	PIVOT ARM BRG & CUP	4
4	620038	BEARING CAP	2
5	620095	BOLT & LOCKWASHER 5/8" X 1-1/2" Gr.8	4
6	620094	3/4" LOCK PIN	2
7	620093	WIRE LOCK CLEVIS PIN 1/4" X 2-3/8"	2
8	620141	FLOAT TUBE-INNER 1-1/2" Sq.	1
9	620142	FLOAT UBE-OUTER 2" Sq.	1
10	620091	CLEVIS PIN 1/2"	2
11	620092	R-CLIP	2
12	620096	T-HANDLE PIN W/R-CLIP	1
13	620092	R-CLIP	1
14	620143	TB-ULTIMAT Jr. DECK WITH DECALS	1
15	620017	SAFETY SHIELD SPRING	2
16	620018	BOLT & LOCKNUT 3/8" X 2" Gr.2	2
17	620144	SAFETY SHIELD	1

Note: A/R = As Required

## 10. Warranty

---

### TRAILBLAZER ATTACHMENTS, LLC

#### LIMITED WARRANTY

TRAILBLAZER ATTACHMENTS, LLC. (the "Manufacturer") warrants, only to the original Purchaser, this equipment will be free from defects in material and workmanship, under normal use and service, for one (1) year from the date of purchase providing this equipment is purchased for individual use only. **Commercial use of this equipment is not covered under any warranty.** This warranty does not apply to any equipment which has been damaged or which has been subjected to change, misuse, negligence, abnormal wear and tear, alterations, tampering, or failure to follow operating instructions. This warranty does not cover any product or parts not manufactured by Trailblazer Attachment, LLC.

**Trailblazer Attachments, LLC offset mowers have a two (2) year Limited Warranty\* on the motor provided it has been properly maintained\*\* and has not been subjected to abuse or misuse.**

Warranty coverage and performance is expressly conditioned upon the return of the completed registration form to Trailblazer Attachments LLC, #7 Rocky Mount Road, Athens TN 37303.

Purchaser and Trailblazer Attachments, LLC hereby (a) submit to the non-exclusive jurisdiction of the courts of competent jurisdiction in Meigs County, Tennessee, and the United State District Court for the Eastern District of Tennessee for resolution of any dispute concerning this Limited Warranty or the rights or obligations of Purchaser and/or Trailblazer Attachments, LLC; (b) agree that any litigation commenced in Tennessee in connection with this Limited Warranty shall be venued in either the Meigs County, Tennessee District Court, or the United States District Court, Eastern District of Tennessee, Southern Division, and (c) waive any objection it may have as to any such action or proceeding brought in such court that such court is an inconvenient forum. Nothing herein shall limit the right of Purchaser or Trailblazer Attachments, LLC (or the right of any permitted successor or assign of either) to bring proceedings against the other in the courts of any other jurisdiction wherein any assets of such other party may be located.

Trailblazer Attachments, LLC reserves the right to make improvements and changes in specifications without notice or obligation to modify previously sold units. The Owner's Manual describes the proper assembly procedures for your implement and furnishes operating and maintenance recommendations to help you obtain long and satisfactory service.

**PURCHASER'S EXCLUSIVE REMEDY FOR BREACH OF WARRANTY, OTHER DEFECT, OR CONDUCT GIVING RISE TO LIABILITY SHALL BE THE REPAIR OR REPLACEMENT OF THE PRODUCT SOLD, AND THE MANUFACTURER UNDER NO CIRCUMSTANCES SHALL BE LIABLE FOR ECONOMIC LOSS OR INCIDENTAL OR CONSEQUENTIAL DAMAGES. THE MANUFACTURER DISCLAIMS ALL IMPLIED WARRANTIES, INCLUDING THE WARRANTY OF MERCHANTABILITY AND FITNESS FOR PURPOSE.**



*Return a copy of the Pre-Delivery Checklist (pg. 3)  
to TrailBlazer Attachments, LLC during the Warranty  
Registration Process*

## WARRANTY REGISTRATION FORM

### Offset Mowers

THIS REGISTRATION FORM MUST BE ON FILE WITH TRAILBLAZER ATTACHMENTS, LLC  
WITHIN **30 DAYS** OF DELIVERY TO PURCHASER, OR WARRANTY CLAIM WILL NOT BE HONORED.

PLEASE RETURN COMPLETED FORM BY E-MAIL, FAX, OR MAIL:

E-MAIL: Sales@TrailBlazerAttachments.com

FAX: 423-405-5904

MAIL: Trailblazer Attachments LLC, #7 Rocky Mount Road, Athens TN 37303

MODEL: \_\_\_\_\_ SERIAL #: \_\_\_\_\_ DELIVERY DATE: \_\_\_\_\_

TRACTOR MAKE & MODEL BEING USED WITH ABOVE UNIT: \_\_\_\_\_

PURCHASER'S NAME: \_\_\_\_\_

ADDRESS: \_\_\_\_\_

CITY: \_\_\_\_\_ STATE: \_\_\_\_\_ ZIP: \_\_\_\_\_

SELLING DEALER'S NAME: \_\_\_\_\_

CITY: \_\_\_\_\_ STATE: \_\_\_\_\_ ZIP: \_\_\_\_\_

**I have read all warranties and agree with these conditions. I agree to read and follow all safety instructions outlined in this manual before operating this offset mower.**

**As the purchaser, I have read, understand, and take responsibility for the use of this attachment. I understand and accept responsibility for the proper use of this Offset Mower. I acknowledge this mower is dangerous if not used correctly or if the safety information is not followed.**

Purchaser's signature: \_\_\_\_\_















**TrailBlazer Attachments LLC.**

7 Rocky Mount Road

Athens, TN 37303

Phone: 423.405.5150

Fax: 423.405.5904

Email: [Sales@TrailBlazerAttachments.com](mailto:Sales@TrailBlazerAttachments.com)